



VILLA 1 [PLOT AREA : 600,32 m²]
 roof

BUILT-UP AREA

Roof	5,20 m ²
First floor	143,15 m ²
Ground floor	155,39 m ²
Basement -1	337,52 m ²
Basement -2	236,27 m ²
TOTAL	877,53 m²

EXTERIOR AREA

Total terrace	151,48 m ²
Total cov. terrace	35,20 m ²
Total pergola terrace	41,93 m ²
Solarium	50,46 m ²
TOTAL	279,07 m²

Garden + free area	242,43 m ²
Pool ground floor	26,25 m ²
Jacuzzi solarium	6,25 m ²

[This plan may be modified according to the development of the Execution Project and the construction. It does not constitute a contractual document. The reflected furnishing is for decoration purposes only. The Project Management reserves the right to make the necessary changes for functional, aesthetic and legal reasons that may occur, without implying a decrease in the quality of the construction]

BRŌVO
 ARQUITECTOS
 SALVADOR CEJUDO

ARQUITECTURA
 CARLOS MORALES





VILLA 1 [PLOT AREA : 600.32 m²]
first floor

BUILT-UP AREA

Roof	5.20 m ²
First floor	143.15 m ²
Ground floor	155.39 m ²
Basement -1	337.52 m ²
Basement -2	236.27 m ²
TOTAL	877.53 m²

EXTERIOR AREA

Total terrace	151.48 m ²
Total cov. terrace	35.20 m ²
Total pergola terrace	41.93 m ²
Solarium	50.46 m ²
TOTAL	279.07 m²

Garden + free area	242.43 m ²
Pool ground floor	26.25 m ²
Jacuzzi solarium	6.25 m ²

[This plan may be modified according to the development of the Execution Project and the construction. It does not constitute a contractual document. The reflected furnishing is for decoration purposes only. The Project Management reserves the right to make the necessary changes for functional, aesthetic and legal reasons that may occur, without implying a decrease in the quality of the construction]

BRŌVO
ARQUITECTOS
SALVADOR CEJUDO

ARQUITECTURA
CARLOS MORALES





VILLA 1 [PLOT AREA: 600.32 m²]
ground floor

BUILT-UP AREA

Roof	5.20 m ²
First floor	143.15 m ²
Ground floor	155.39 m ²
Basement -1	337.52 m ²
Basement -2	236.27 m ²
TOTAL	877.53 m²

EXTERIOR AREA

Total terrace	151.48 m ²
Total cov. terrace	35.20 m ²
Total pergola terrace	41.93 m ²
Solarium	50.46 m ²
TOTAL	279.07 m²

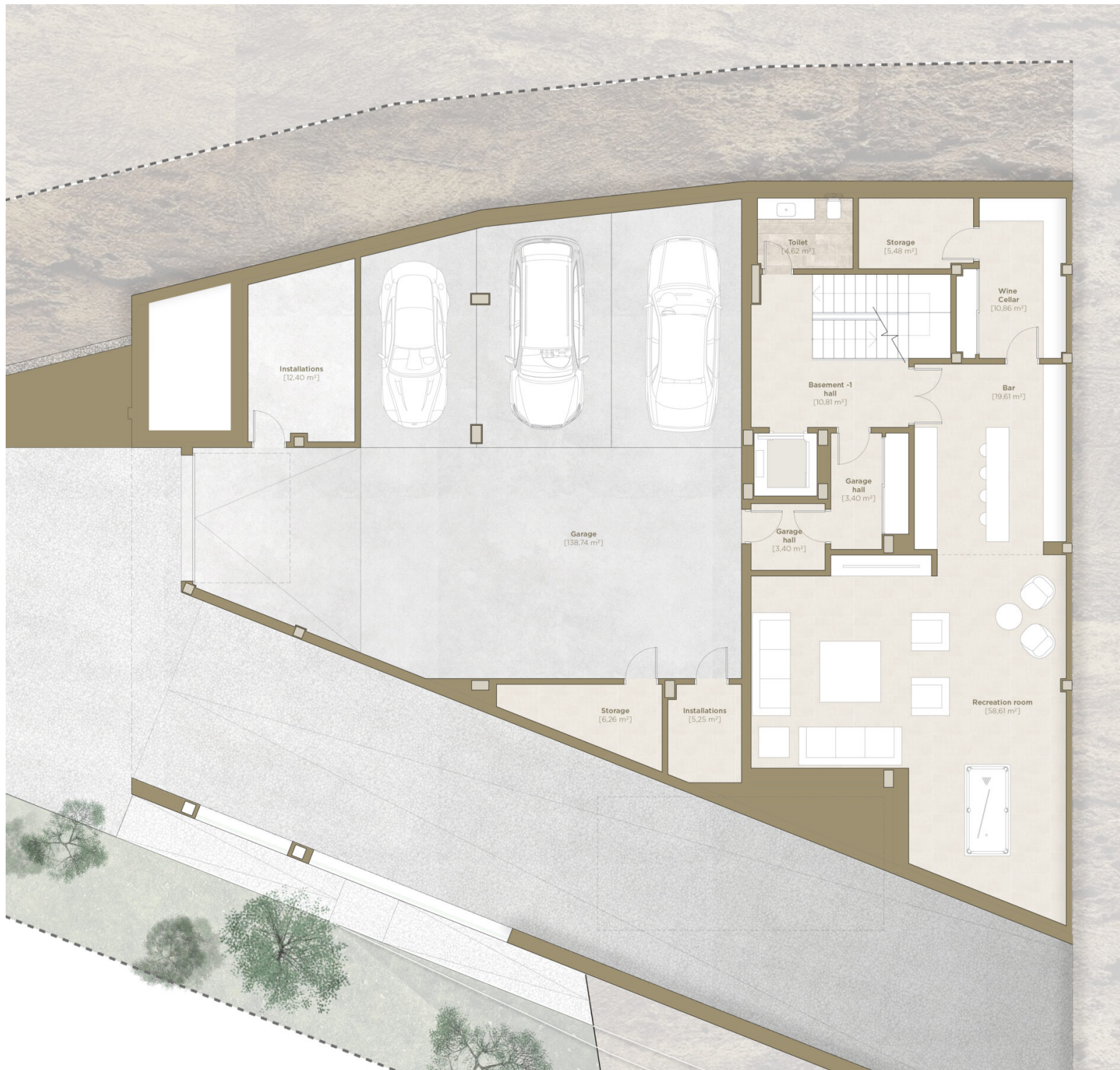
Garden + free area	242.43 m ²
Pool ground floor	26.25 m ²
Jacuzzi solarium	6.25 m ²

[This plan may be modified according to the development of the Execution Project and the construction. It does not constitute a contractual document. The reflected furnishing is for decoration purposes only. The Project Management reserves the right to make the necessary changes for functional, aesthetic and legal reasons that may occur, without implying a decrease in the quality of the construction]

BRŌVO
ARQUITECTOS
SALVADOR CEJUDO

ARQUITECTURA
CARLOS MORALES





VILLA 1 (PLOT AREA: 600.32 m²)
basement -1

BUILT-UP AREA

Roof	5.20 m ²
First floor	143.15 m ²
Ground floor	155.39 m ²
Basement -1	337.52 m ²
Basement -2	236.27 m ²
TOTAL	877.53 m²

EXTERIOR AREA

Total terrace	151.48 m ²
Total cov. terrace	35.20 m ²
Total pergola terrace	41.93 m ²
Solarium	50.46 m ²
TOTAL	279.07 m²

Garden + free area	242.43 m ²
Pool ground floor	26.25 m ²
Jacuzzi solarium	6.25 m ²

[This plan may be modified according to the development of the Execution Project and the construction. It does not constitute a contractual document. The reflected furnishing is for decoration purposes only. The Project Management reserves the right to make the necessary changes for functional, aesthetic and legal reasons that may occur, without implying a decrease in the quality of the construction]

BRŌVO
ARQUITECTOS
SALVADOR CEJUDO

CM
ARQUITECTOS
CARLOS MORALES





VILLA 1 [PLOT AREA : 600.32 m²]
basement -2

BUILT-UP AREA

Roof	5.20 m ²
First floor	143.15 m ²
Ground floor	155.39 m ²
Basement -1	337.52 m ²
Basement -2	236.27 m ²
TOTAL	877.53 m²

EXTERIOR AREA

Total terrace	151.48 m ²
Total cov. terrace	35.20 m ²
Total pergola terrace	41.93 m ²
Solarium	50.46 m ²
TOTAL	279.07 m²

Garden + free area	242.43 m ²
Pool ground floor	26.25 m ²
Jacuzzi solarium	6.25 m ²

[This plan may be modified according to the development of the Execution Project and the construction. It does not constitute a contractual document. The reflected furnishing is for decoration purposes only. The Project Management reserves the right to make the necessary changes for functional, aesthetic and legal reasons that may occur, without implying a decrease in the quality of the construction]

BRŌVO
ARQUITECTOS
SALVADOR CEJUDO

ARQUITECTURA
CARLOS MORALES

