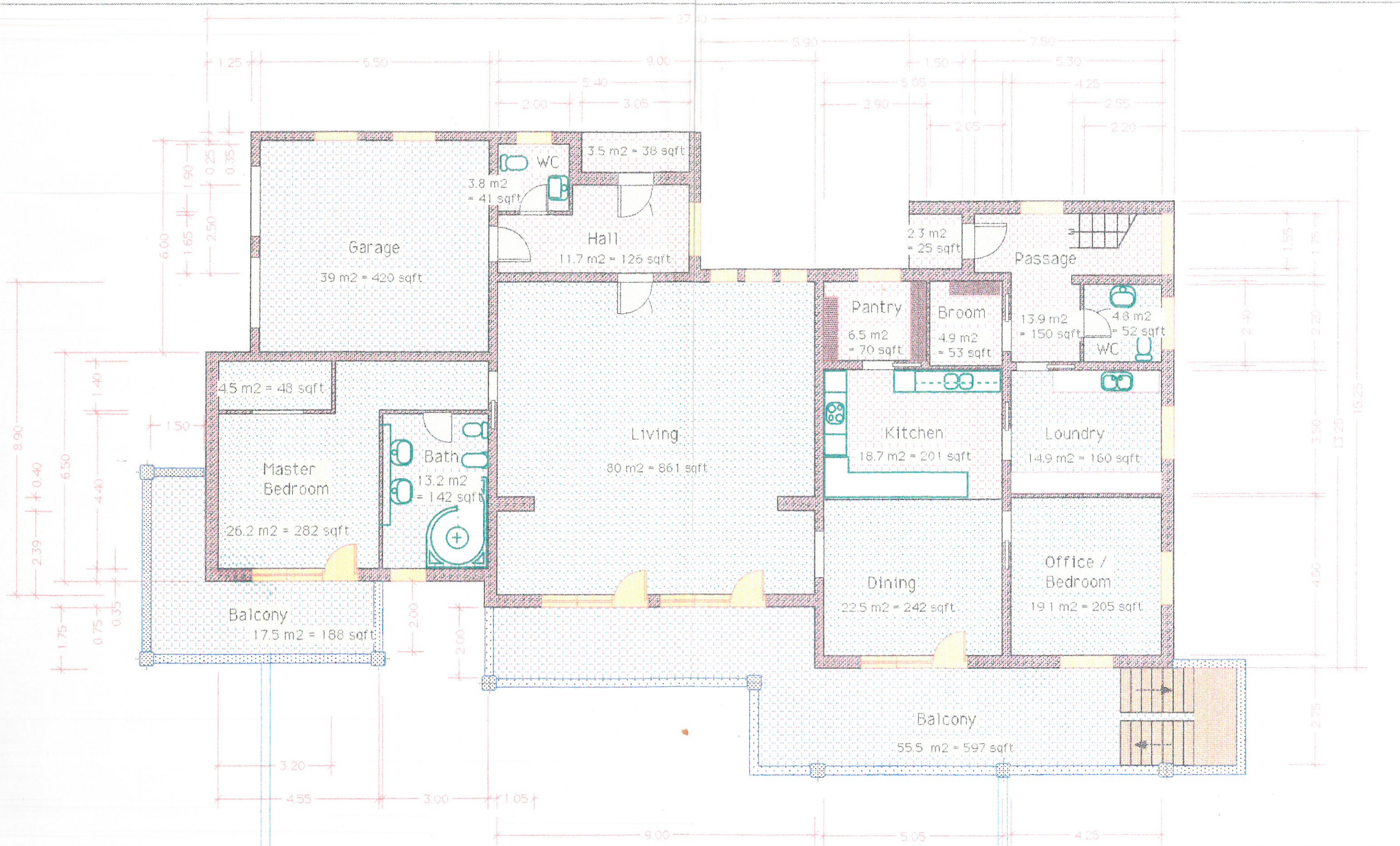


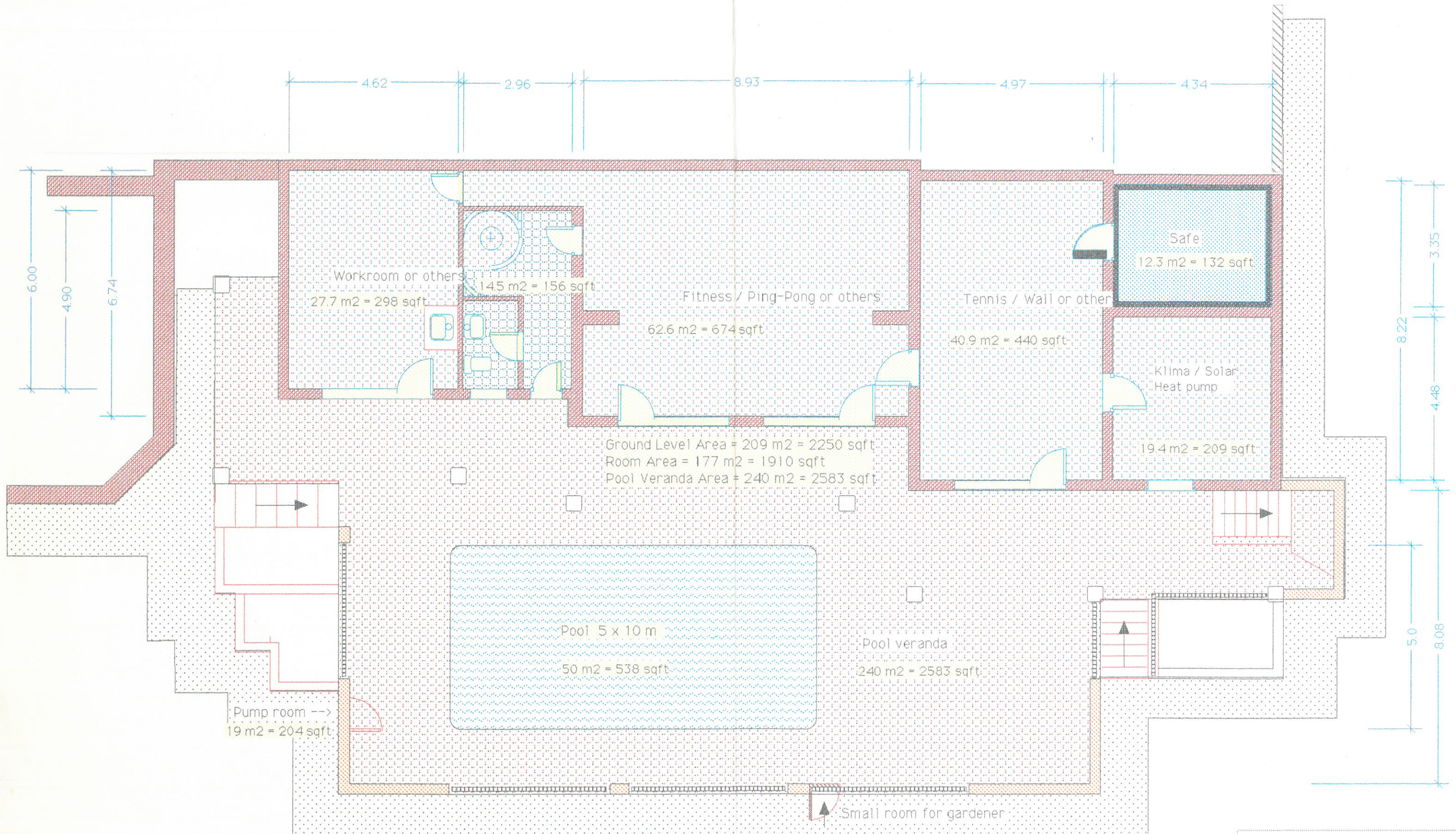
Guest Level Area = 108 m² = 1160 sqft
 Balcony Area = 36 m² = 387 sqft





Living Level Room Area Total = 289 m² = 3111 sqft
 Living Level Raw Area = 336 m² = 3615 sqft
 Living Level Wall Area EG = 47 m² = 506 sqft
 Living Level Balcony Area = 73 m² = 785 sqft
 Roof Area = 484 m² = 5209 sqft

Parc. 345 y 346		
Plan	Plano	M 1 : 100
Datum	Fecha	04.Nov.1987
File	File	S 345 E6 910716
Text	Sit.	Erdgeschoß



Parc. 345 y 346		
Plan	Plano	M 1 : 100
Datum	Fecha	28.12.88
File	File	UG-CCD 910717
Text	Sit.	Untergeschoß

File: UG 881228
 Converted to ClarisCad
 UG-CCD 910814